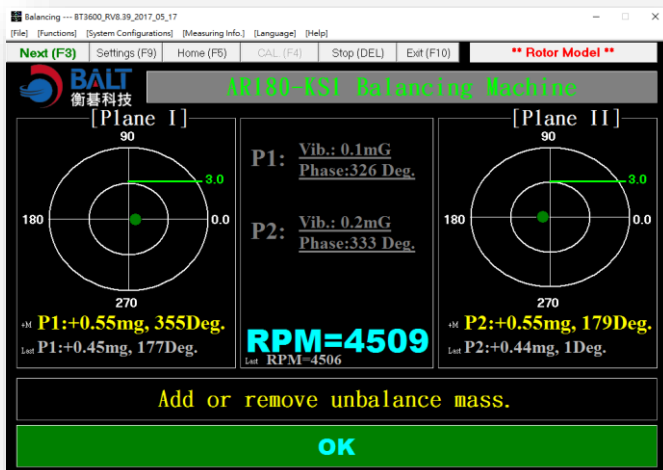


AR180-KS1

Active Fan-Balancing Machine

- More **Rapid** + more **Stable** + more **Precise**
- **High Precise** and **High Throughput** simultaneously
- More **Stable** from state-of-art technology
- **ISO 1940** international unbalance standard
- Mass production database and **SPC** report
- Barcode **e-Tracing** interface
- Safety Light Curtains
- Dual/Three planes for **adding** or **removing** mass
- More **Reliable** chuck with low GR&R



BalTech is Balancing Technology Expert

<http://www.baltech.com.tw> TEL:+886-3-5908611

>>>>> More **Rapid** >> More **Stable** >> More **Precise**

High Precise and High Throughput simultaneously

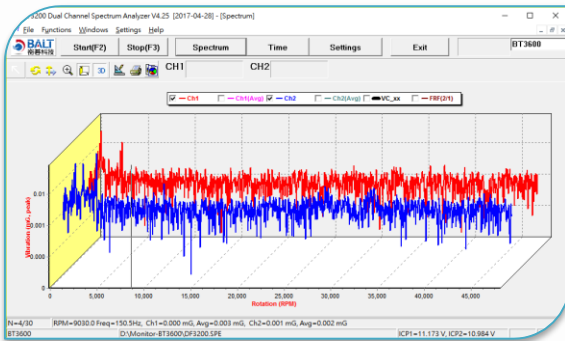
- ISO 1940 Tolerance Calculator
- Database and SPC report
- Background noise verification
- Add or remove unbalance
- Vibration Spectrum Analyzer
- Excel format SPC report



BalTech E-Tracing Database system (2017-01-18) Ver 3.61

Begin Time: 2017/5/16 下午 02:31:41 End Time: 2017/5/20 上午 02:31:41

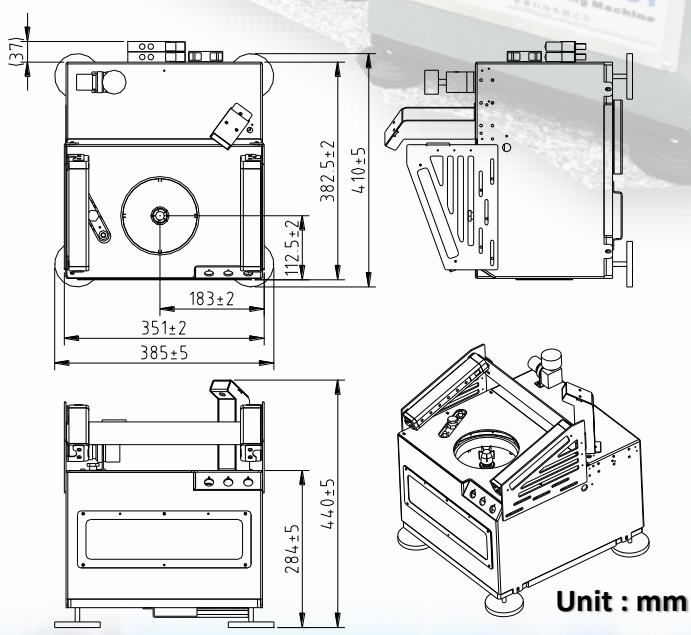
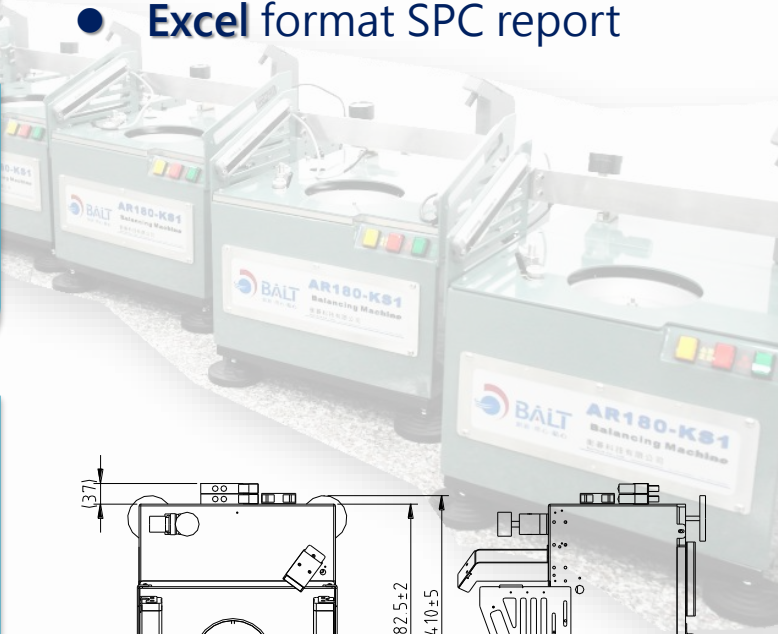
Data Search	Export to Excel	Exit	Report Time: 2017/5/19 下午 02:31:43	Total N: 9						
1	Delta#	0.591	2.4	0.647	190.6	0.104	243.9	0.618	6.7	JDE_NB_2013
2	Delta#	1.204	354.9	1.250	179.6	0.111	242.9	1.226	357.3	JDE_NB_2013
3	Delta#	0.134	158.8	0.116	323.9	0.037	211.7	0.124	151.9	JDE_NB_2013
4	Delta#	1.213	359.1	1.220	188.6	0.033	257.3	1.216	359.8	JDE_NB_2013
5	Delta#	0.502	358.7	0.610	182.9	0.116	201.4	0.555	1.0	JDE_NB_2013
6	Delta#	0.672	355.3	0.652	173.7	0.027	37.1	0.620	354.5	JDE_NB_2013
7	Delta#	0.211	36.6	0.281	262.2	0.201	310.7	0.227	62.8	JDE_NB_2013
8	Delta#	4.051	175.8	4.332	356.5	0.285	6.4	4.192	176.2	JDE_NB_2013
9	Delta#	0.546	175.3	0.548	358.5	0.031	83.3	0.546	176.9	JDE_NB_2013



A7 DC4028

	A	B	C	D	E	F	G	H	I	
1	BalTech Balancing Testing Data Report, Version 2.83									
2	Report Time: 2017/5/19 下午 02:32:13									
3	Total N: 9									
4										
5										
6	Rotor No	P1 Mass(mg)	Angle(Deg.)	P2 Mass(mg)	Angle(Deg.)	ST Mass(mg)	Angle(Deg.)	CP Mass(mg)	Angle(Deg.)	Manual
7	DC4028	0.591	2.4	0.647	190.6	0.104	243.9	0.618	6.7	pc32212
8	DC4028	1.204	354.9	1.250	179.6	0.111	242.9	1.226	357.3	pc32212
9	DC4028	0.134	158.8	0.116	323.9	0.037	211.7	0.124	151.9	pc32212
10	DC4028	1.213	359.1	1.220	188.6	0.033	257.3	1.216	359.8	pc32212
11	DC4028	0.502	358.7	0.610	182.9	0.116	201.4	0.555	1.0	pc32212
12	DC4028	0.672	355.3	0.652	173.7	0.027	37.1	0.620	354.5	pc32212
13	DC4028	0.211	36.6	0.281	262.2	0.201	310.7	0.227	62.8	pc32212
14	DC4028	4.051	175.8	4.332	356.5	0.285	6.4	4.192	176.2	pc32212
15	DC4028	0.546	175.3	0.548	358.5	0.031	83.3	0.546	176.9	pc32212

Searching Conditions:
Begin Time: 2017/5/16 T# 02:31:41
End Time: 2017/5/20 上午 02:31:41



>>>>> More **Rapid** >> More **Stable** >> More **Precise**

High Precise and High Throughput simultaneously

AR180-KS1 Technical Specifications

Work-piece (diameter x height)	(10.0 x 2.0) - (80.0 x 25.0) (mm)
Fan shaft diameter	0.6 – 3.2 (mm)
Maximal weight of work-piece	50 grams
Working rotation speed	2,100 -5,000 (RPM)
Types of balancing detection	Dual or three planes
Dual servo-motor and driver	400 + 100 (Watt.)
Achievable resolution (note)	0.5 (μm)
Minimal residual unbalance (note)	0.009~0.03 (g-mm)
USB Plug and Play Interface	USB 3.0 fast connector
Dimension (length x width x height)	350.0 x 400.0 x 450.0 (mm)
The weight of balancing machine	45.0 (Kg)
Power Requirements	Single Phase 200-220V, 1KVA

Note : the value is depend on fan size.

※ Changes to appearance and specifications are subject to change without notice



BALtech Co. Ltd.

No.122, Zhongzheng 2nd Rd., Hukou Township,
Hsinchu County 303, Taiwan (R.O.C.)

[Http://www.baltech.com.tw](http://www.baltech.com.tw)

Tel:+886-3-590-8611 (Rep.)

Fax:+886-3-590-3983

